



  
**FEEDING  
AMERICA**<sup>®</sup>  
RIVERSIDE | SAN BERNARDINO

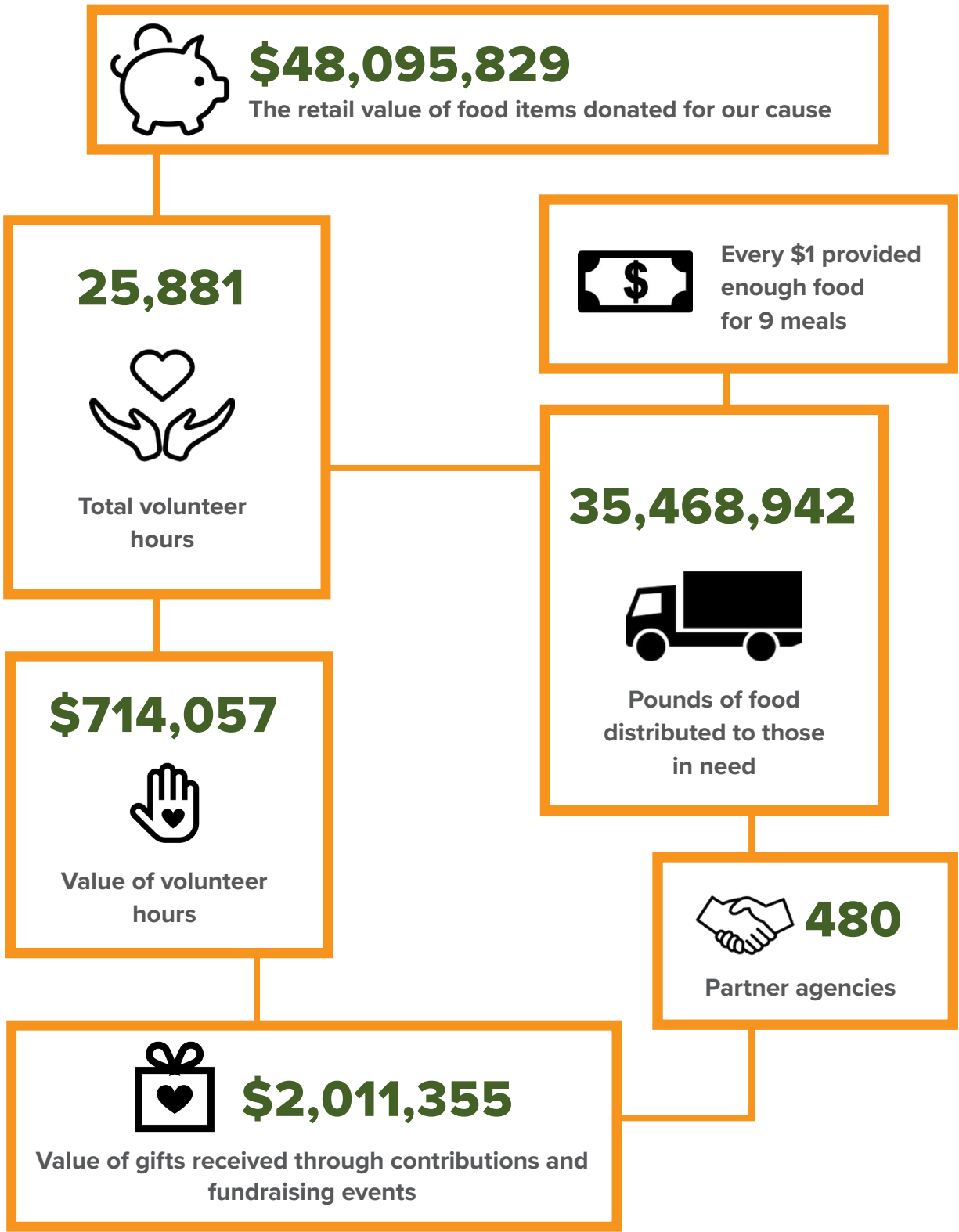
# ANNUAL REPORT 2015-2016

*GIVE WHERE YOU LIVE*



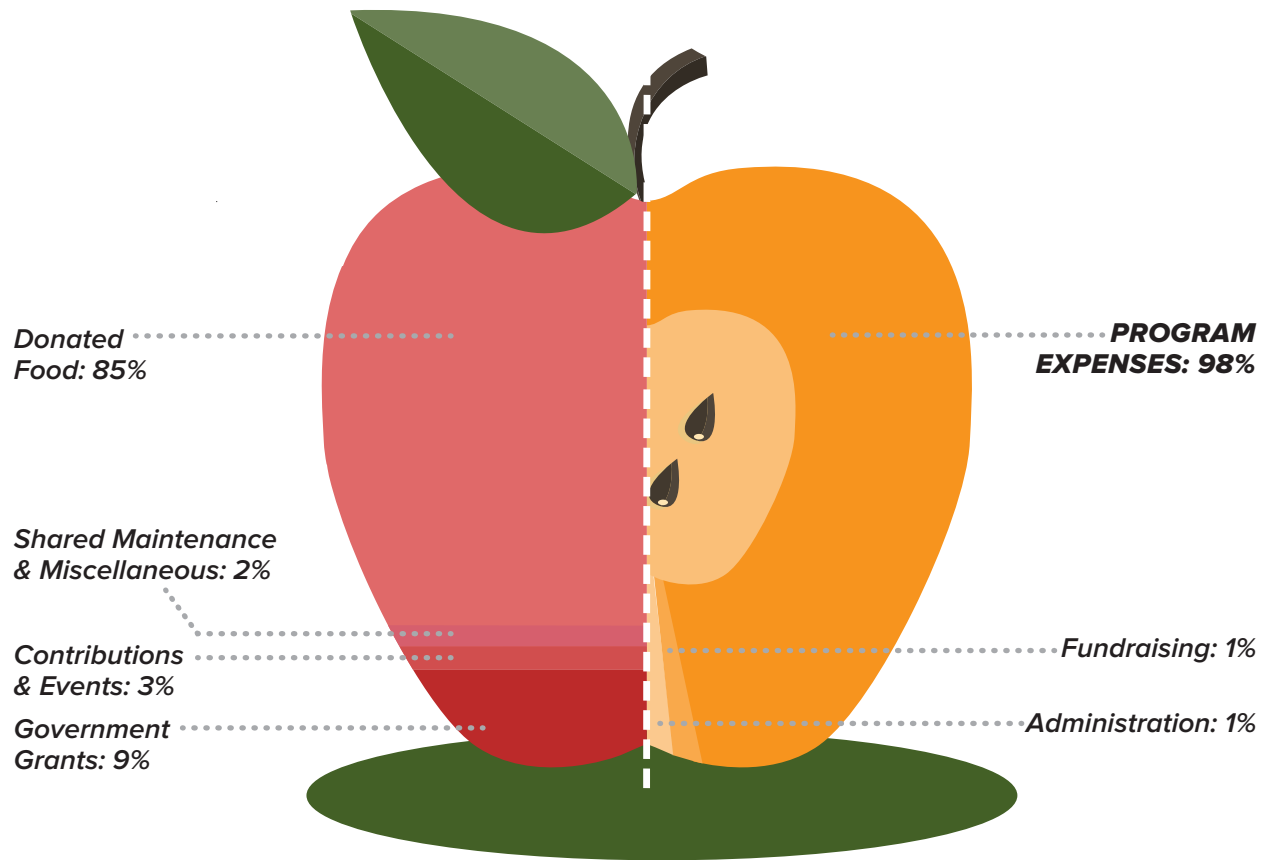
# 2016 HIGHLIGHTS

With help from our community, we are able to work towards our mission of alleviating hunger in the Inland Empire.



Your support makes the difference

# FINANCIALS JULY 1, 2015 – JUNE 30, 2016



## REVENUE

DONATED FOOD	48,095,829
CONTRIBUTIONS & EVENTS	2,011,355
GOVERNMENT GRANTS	5,104,891
SHARED MAINTENANCE	1,170,686
OTHER	56,979
<b>TOTAL</b>	<b>56,439,740</b>

## NET ASSETS

UNRESTRICTED	676,008
TEMPORARILY RESTRICTED	1,827,064
<b>TOTAL</b>	<b>2,503,072</b>

## EXPENSES

FUNCTIONAL EXPENSES	
SENIOR FOOD SHARE & MOBILE PANTRY	4,549,002
CHILD NUTRITION PROGRAM	682,351
CAL-FRESH	454,900
DFAP/USDA	15,921,508
FOOD DISTRIBUTION PROGRAM	35,254,767
<b>TOTAL PROGRAM EXPENSES</b>	<b>56,862,528</b>
FUNDRAISING	386,122
ADMINISTRATION	269,969
<b>TOTAL FUNCTIONAL EXPENSES</b>	<b>57,518,619</b>

# TOP FOOD DONORS JULY 1, 2015 – JUNE 30, 2016

- 1. WALMART
- 2. TARGET
- 3. DOLLAR TREE
- 4. GENERAL MILLS
- 5. SAM'S
- 6. ALDI
- 7. BIG LOTS
- 8. UNFI
- 9. STATER
- 10. RALPHS

---

# TOP PARTNER AGENCIES JULY 1, 2015 – JUNE 30, 2016

- 1. TOTAL RESTORATION, INC., BARSTOW
- 2. JESUCRISTO ES LA VERDAD, MIRA LOMA
- 3. CARITAS SAN VICENTE, FONTANA
- 4. SDA PERRIS SPANISH CHURCH, PERRIS
- 5. MURRIETA COMMUNITY PANTRY, MURRIETA



**OVER 425,000 INDIVIDUALS,**  
(includes families, seniors and veterans) are assisted each month in the Inland Empire.  
**2.5 MILLION POUNDS** of food is distributed each month.

**500 PARTNERS**  
(includes food pantries, soup kitchens, emergency shelters, senior meal sites, day care centers and youth programs) help us distribute food.

# TOP FINANCIAL DONORS \$5000+

JULY 1, 2015 – JUNE 30, 2016

Dart Foundation  
 Ralphs  
 Feeding America  
 Kroger Co. Foundation  
 Wells Fargo  
 Mathis Brothers Furniture  
 Albertsons  
 Wal-Mart  
 Stater Bros. Charities  
 E. Rhodes and Leona B. Carpenter Foundation  
 San Manuel Band of Mission Indians

The CarMax Foundation  
 Target  
 Safeway  
 Union Pacific  
 Dr. Frank A. Haniff  
 S. Mark Taper Foundation  
 Riverside County Supervisor Chuck  
 Bank of America Corp.  
 The TJX Foundation  
 The TJX Companies  
 Jarden Consumer Solutions Community Fund, Inc

**VOLUNTEERS CONTRIBUTE 25,881 HOURS EACH YEAR**

Visit [FeedingAmericaE.org/volunteer](http://FeedingAmericaE.org/volunteer) to sign up!



2950-A JEFFERSON ST, RIVERSIDE, CA 92504  
 951-359-4757 | [FEEDINGAMERICAIE.ORG](http://FEEDINGAMERICAIE.ORG)

.....  
**98¢ OF EVERY \$1 RAISED GOES TO  
 FOOD AND PROGRAMS**

## BOARD MEMBERS

### BOARD CHAIR

Aaron W. Hodgdon, *Hodgdon Group*

### VICE CHAIR

Jeanne Schulz, *Cargill*

### TREASURER

Victor Behnke, *Wells-Fargo Bank*

### SECRETARY

Clara Vanderpool, *Community Representative*

### BOARD MEMBERS

Dave Byers, *Esri*

Desmond Ditchfield, *Community Representative*

Wanda Farah, *Rich Cosner & Associates*

Dan Flores, *County of San Bernardino Chief of Staff*

Matt Friedlander, *Habitat for Humanity Riverside*

Lenore Frost, *Community Volunteer, Inland Harvest*

Dallas Holmes, *Riverside Superior Court (Retired)*

Brandy Nelson, *San Bernardino Valley College*

Steve Ogilvie, *CPA CMPE, SAC Health System*

Jennifer Olson, *Target Stores*

Gale Schulte, *City of Riverside Fire Department*

Gregory K. Wilkinson, *Community Representative*

Eric Arredondo, *Community Representative*